

INTERIORS BY  
**LAUREN HOLDSWORTH**



Interior Design Portfolio

Selected works 2022-2023

# 01

2023

## SOFTWARE

SketchUp  
Enscape  
AutoCAD

# HARBOUR HUES

Welcome to Harbor Hues, where the city's harbor meets a vibrant palette of creativity and culinary excellence. This unique space redefines dining by seamlessly blending art, culture, and panoramic views. The design celebrates color, diversity, and urban energy, creating an immersive atmosphere that captures the city's spirit.

Harbor Hues bursts with vibrant colors inspired by the natural elements of the harbor, infusing energy into every corner.

The interior features an eclectic mix of decor from local and international artisans- mismatched chairs, quirky wall art, and handcrafted light fixtures create a curated gallery ambiance. Floor-to-ceiling windows offer breathtaking views during the day, while outdoor seating on a terrace allows al fresco dining with picturesque scenery in the evening.

Doubling as an art gallery, Harbor Hues showcases rotating exhibitions from local artists. Contemporary paintings, sculptures, and installations adorn the walls, creating a dynamic atmosphere that sparks conversations and inspires wonder.



Balcony Bar



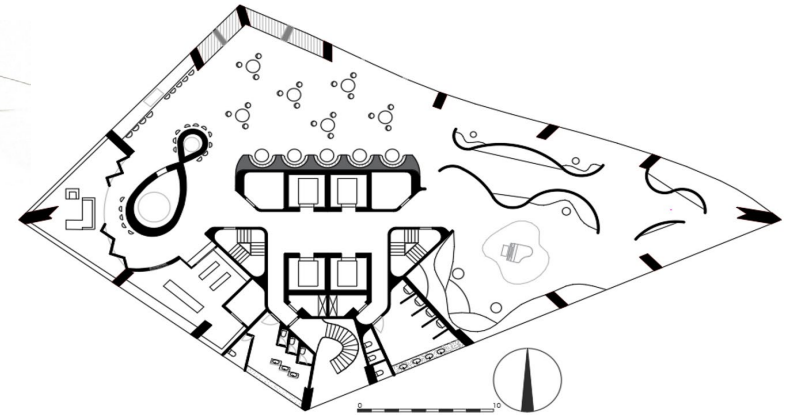
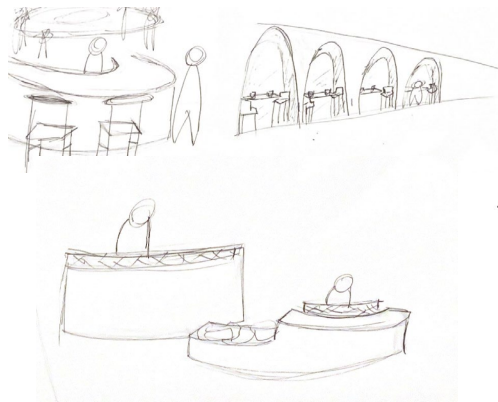
Entry



Piano Lounge



Gallery



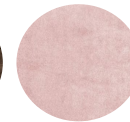
Green Velvet



Blue Tiles



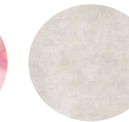
Oak Timber



Carpet-Salmon



Multi-coloured wallpaper



Textured plaster



# 02

2023

**SOFTWARE**

SketchUp

Enscape

## MOROCCAN ART GALLERY

The art gallery is a sacred space, uniting observers with the soul of its artwork and blurring boundaries between art and architecture. It becomes a living entity, a fusion of expression and magnificence.

A grand open courtyard in Morocco's rugged landscape marks the start of a meticulously designed sensory journey through various rooms. Seamlessly merging with its surroundings, the gallery facilitates a smooth transition from the external world to the realm of artistry.

Each room, alcove, and corridor is crafted to enrich the viewer's experience, encouraging exploration of creativity.

Transforming into an inspirational haven, the gallery creates an immersive atmosphere through light, shadow, colour blending, and the fusion of artistic genres, captivating the senses and stimulating the mind.



Outdoor passageway



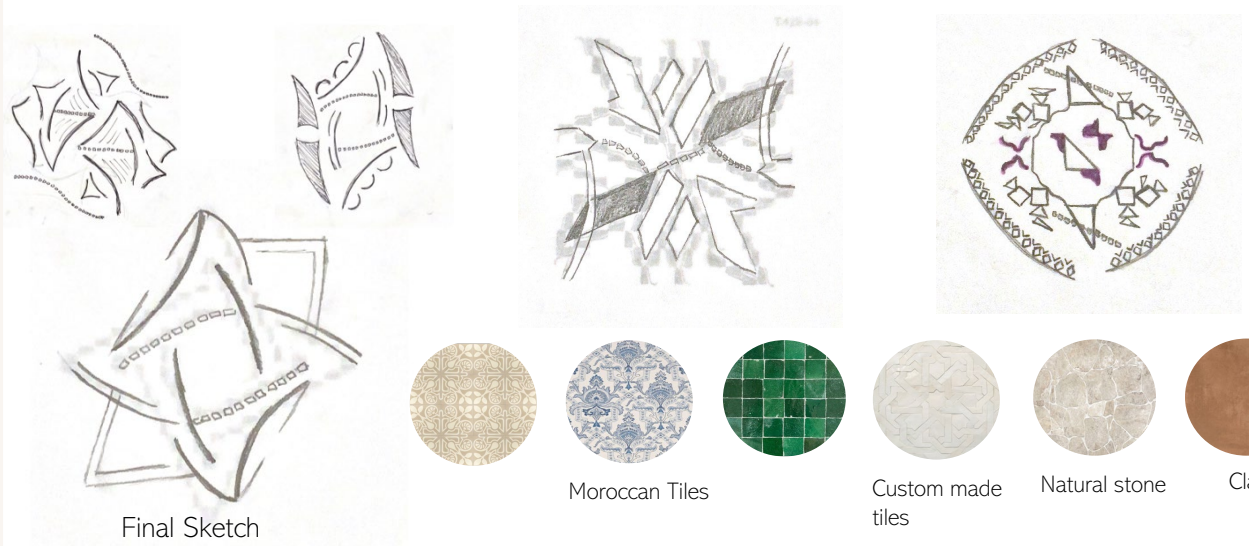
Under ground gallery



Outdoor pool



Landscape



Final Sketch

Moroccan Tiles

Custom made tiles

Natural stone

Clay

# 03

2023

## SOFTWARE

SketchUp  
Enscape  
AutoCAD

# MNEMOSYNE APARTMENTS

Mnemosyne are serviced apartments, seamlessly blending form, function, and aesthetics. The innovative sculptural design not only captures the eye but also provides a unique experience for residents.

Elevating the main living space optimizes the skyline view, integrating natural surroundings into daily life. Floor-to-ceiling windows flood the interior with light, establishing a strong connection between indoor and outdoor spaces, enhancing the overall ambiance.

Luxurious features like hardwood flooring and dark tiling add sophistication, reflecting the client's taste. Personal collections, including a grand piano, sculptures, and framed photography, infuse individuality and warmth into the living space.

Custom-built furniture and joinery showcase meticulous attention to detail, optimizing functionality and enhancing visual appeal. The design's ability to evoke curiosity reflects creativity and thoughtfulness in every aspect.



Passage between apartments



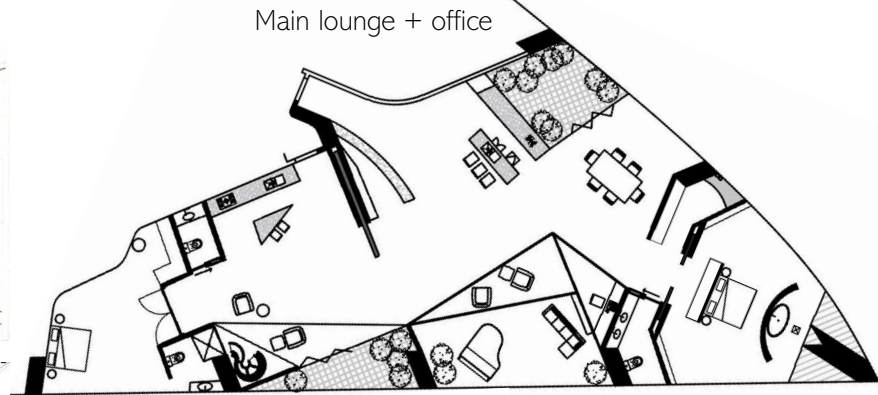
Lounge room



Kitchen



Main lounge + office



Linen  
Furnishing



Natural Wood



Faux Leather  
Furnishings



Clay



Natural stone



## SOFTWARE

SketchUp

Enscape

AutoCAD

## TUSCAN HOME

Nestled in the heart of Tuscany, Italy, this home offers a secluded retreat amid serene rolling hills. Strategically placed, it provides an unobstructed 360-degree view of the picturesque Tuscan landscape, becoming a lively haven during warmer months.

The design concept centers around communal spaces—kitchen, dining, and living areas—inspired by authentic Italian design. Earthy tones, wood, and stone create a tranquil and authentic ambiance, reflecting the timeless beauty of the Italian countryside.

Large windows and lofty ceilings enhance the connection with the Tuscan sun, illuminating spaces and harmonizing the indoors with the outdoors. Generously open rooms foster an inviting atmosphere, allowing the organic ambiance of the natural surroundings to permeate the interior.

Materials like timber and stone not only contribute to the organic, natural mood but also complement the beauty of the landscape.



Tuscan Landscape



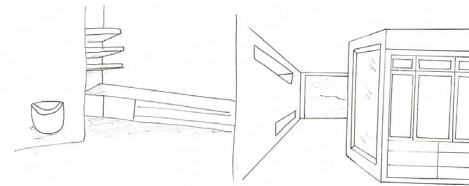
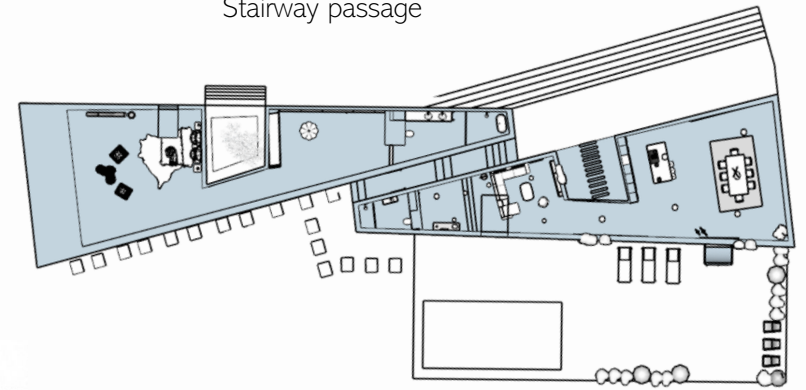
Courtyard



Master bedroom



Stairway passage



Oak Timber

Linen  
Furnishing

Tan Brick

Polished  
ConcreteHessian  
Furnishing

# 05

2022

## SOFTWARE

SketchUp  
Enscape  
AutoCAD

# SUSTAINABLE ELEGANCE

Embracing the beauty of nature and championing organic living, my design concept centers on harmoniously integrating curves and flow. Inspired by organic forms, my philosophy emphasises fluidity and soft lines, creating a space that feels opulent and inviting.

Central to my approach is the use of responsibly sourced organic materials, minimizing environmental impact. Custom-made furniture, crafted with precision, reduces waste and allows for personalized designs. The color palette draws from natural landscapes, with earthy tones dominating and soft accents adding sophistication.

Natural light is maximised through strategically placed windows, complemented by energy-efficient LED fixtures. The store layout guides visitors seamlessly through curated displays, optimizing both aesthetic appeal and functionality. The sustainable interior design is a testament to luxury, customization, and eco-consciousness—a haven where customers can indulge in bespoke furniture while respecting the environment.



Front facade



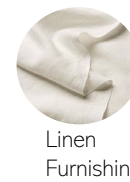
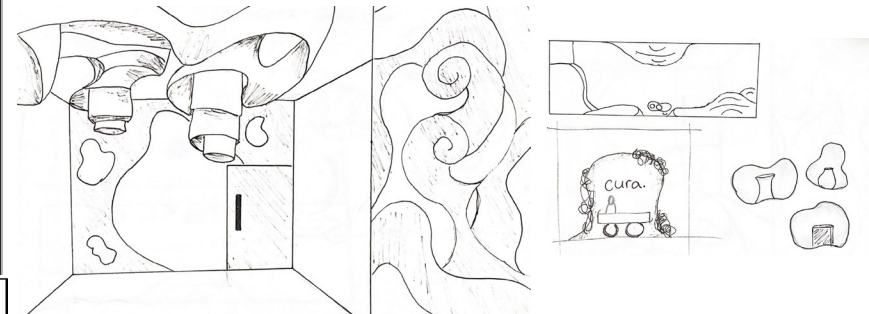
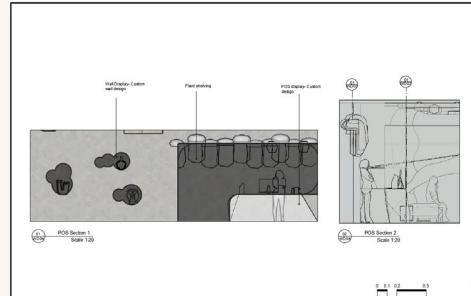
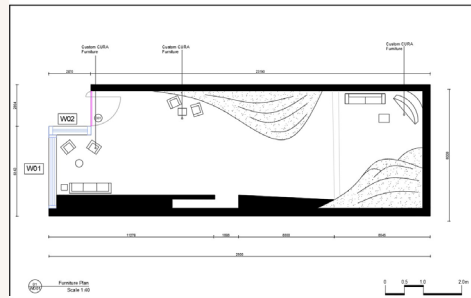
Front display



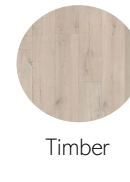
Wall display



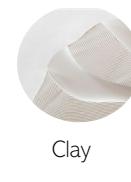
Entrance display



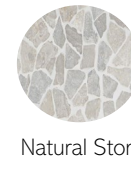
Linen  
Furnishing



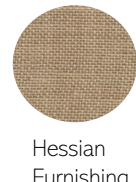
Timber



Clay



Natural Stone



Hessian  
Furnishing



# WILLCOX & MOFFLIN LTD

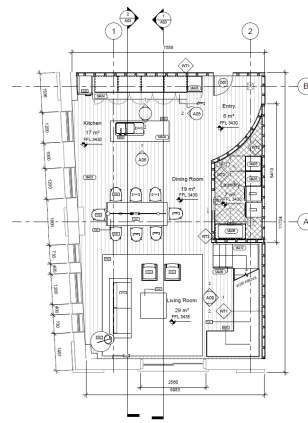
Welcome to a one-of-a-kind, two-story apartment transformed from the historic five-story Wilcox & Mifflin LTD building. The open-concept first floor seamlessly links living, dining, and kitchen spaces, complemented by seamless integrated appliances.

Ascend the gracefully designed staircase to discover two spacious bedrooms, with the master featuring a walk-in wardrobe and ensuite bathroom.

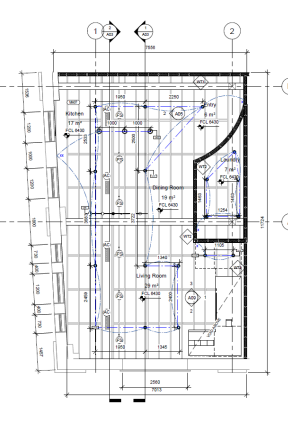
Throughout, high-quality materials and finishes ensure timeless elegance, creating a harmonious fusion of modern design and luxurious comfort. Custom joinery and unique bespoke spaces cater specifically to the clients. Welcome to a home where every curve narrates a tale of refined living.

## Client Brief

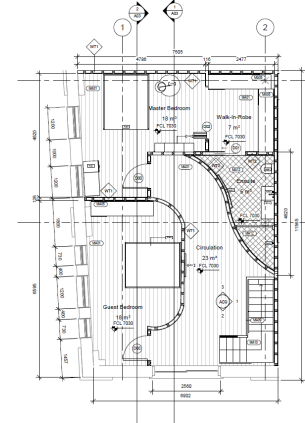
- 144 square meter unit.
- Two floors.
- Retain existing windows, columns and exposed ceiling.
- Open and spacious floor plan.
- The staircase must be a key feature.
- Reflect on the industrial nature of the building.
- Bold colours and raw materials to compliment the clients existing eclectic furniture and artworks.



Level 1 - Floor Plan



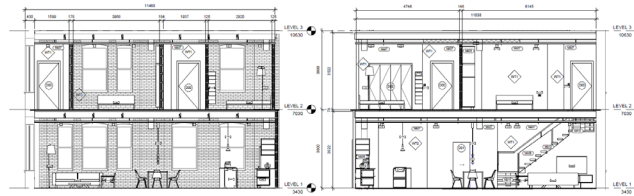
Level 1 - RCP



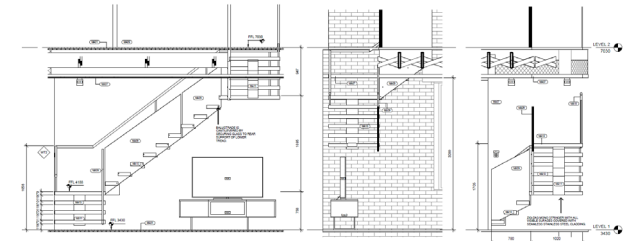
Level 2 - Floor Plan



Level 2 - RCP



Section



Stair elevation

Stair section



Hessian  
Furnishing



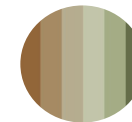
Linen  
Furnishing



Timber



Polished  
Concrete



Dulux- Earth  
tones