

# Odette Azouri

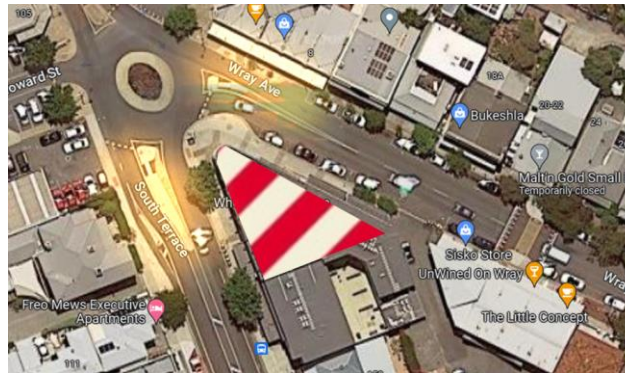
Interior Design And Decoration

# Portfolio

Bringing the  
Outside Inside  
As they say...

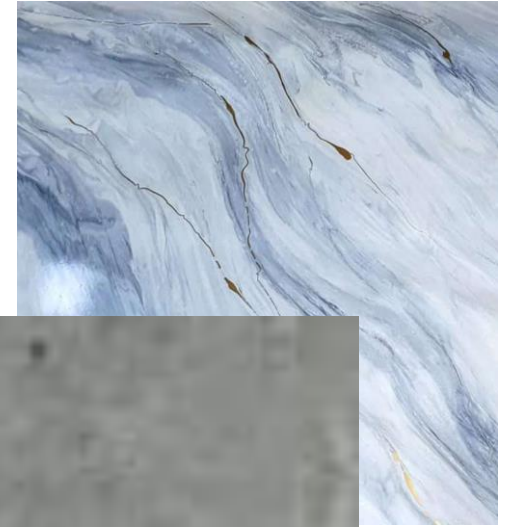


Designing THE Art Series Hotel Group @ 149 South Terrace Fremantle, WA.  
(assessment).

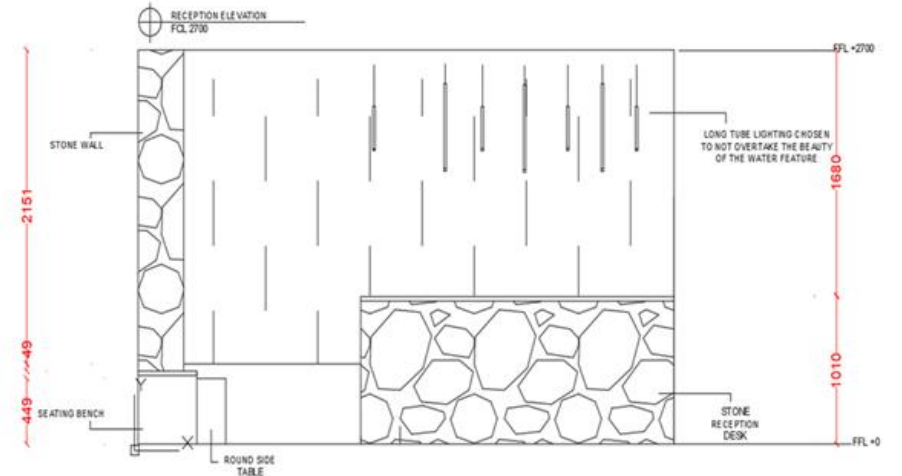
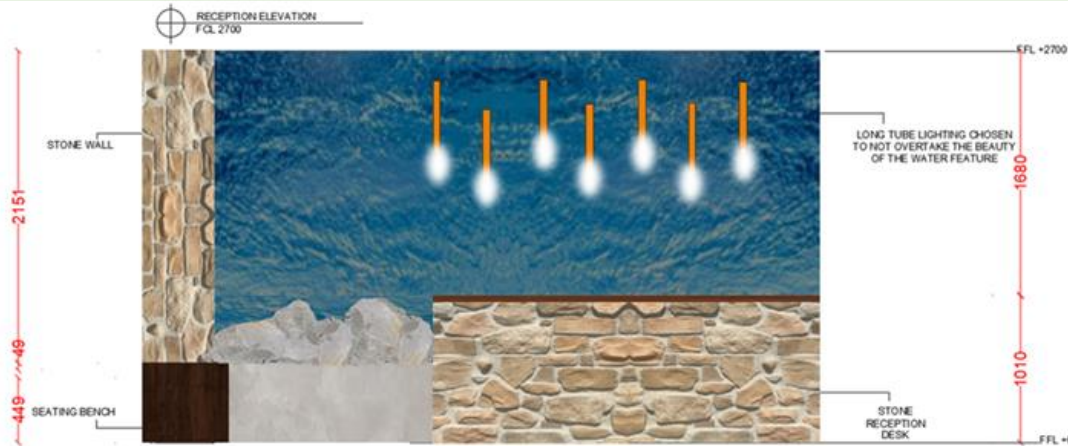


This project is a triangular shape Hotel building. It offers a hospitality venue and accommodations, to attract all different clientele, local and international. The design of the hotel is based on the Artist Joanne Duffy, the way its designed is purely about her bio and artworks.

Sketchup  
3D of the  
Lobby  
On Ground  
floor



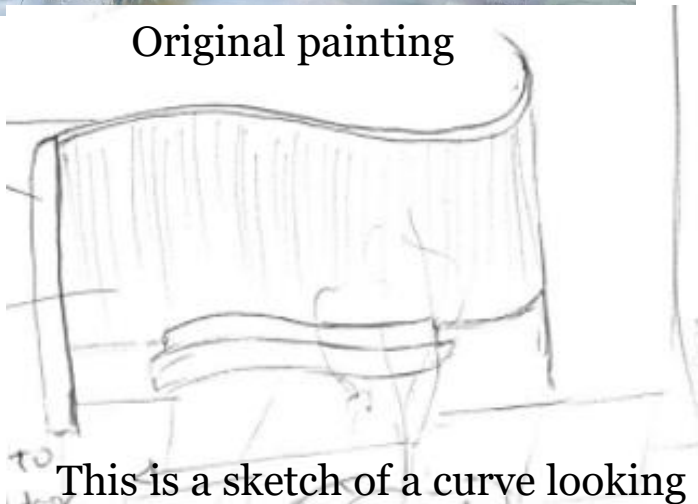
Reception  
desk  
Elevation



Original Painting by Joanne Duffy placed at the Reception area and designed it using the same colours and concept.



Original painting



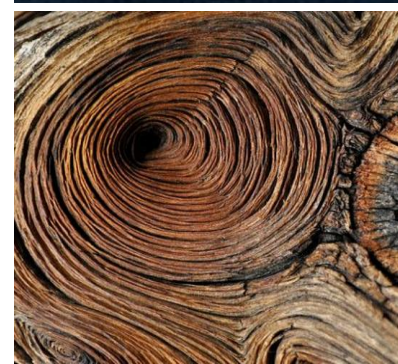
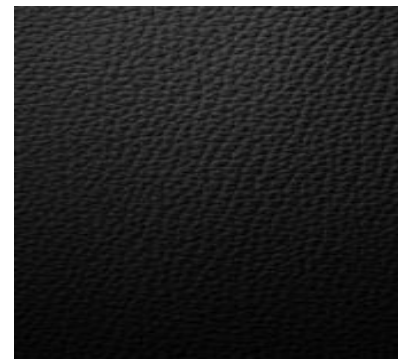
This is a sketch of a curve looking Reception to represent the flawless Of the waves.

My painting depicting the painting of the artist.

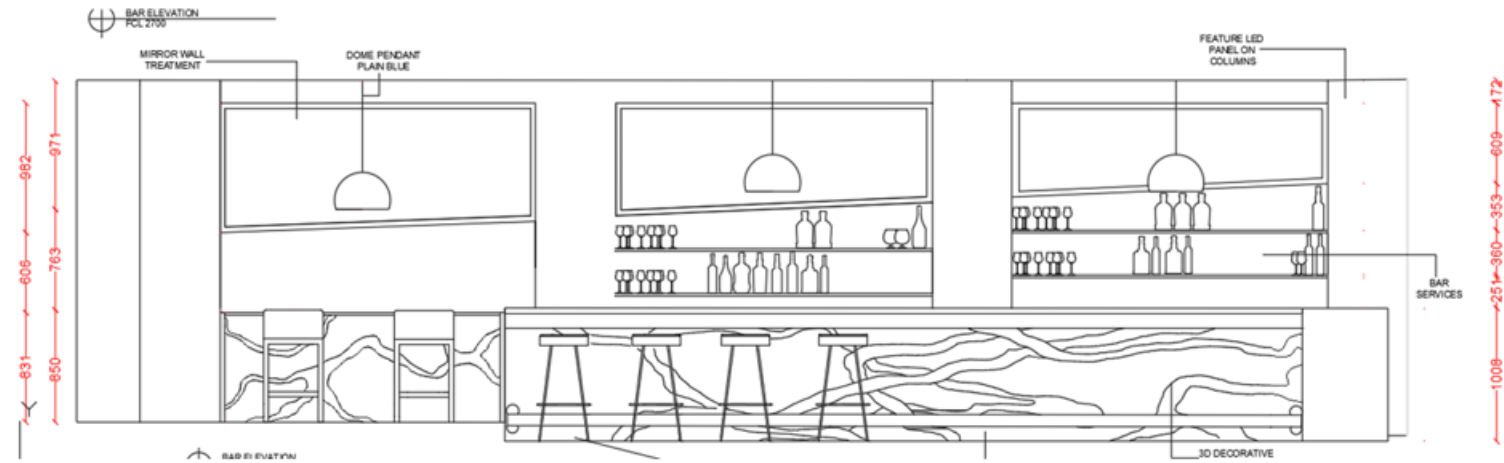




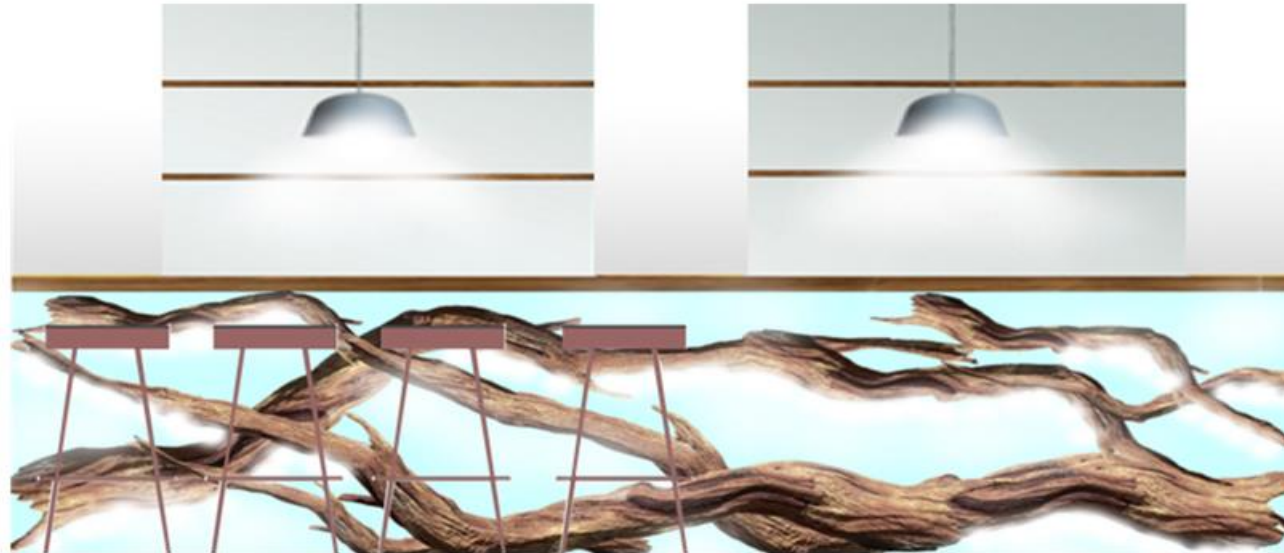
Sketchup drawing  
mimicking  
branches and  
using them as part  
of the bar area  
feature walls and  
the 2 columns  
feature walls



## AutoCAD Bar Elevation



## Photoshop Bar Elevation



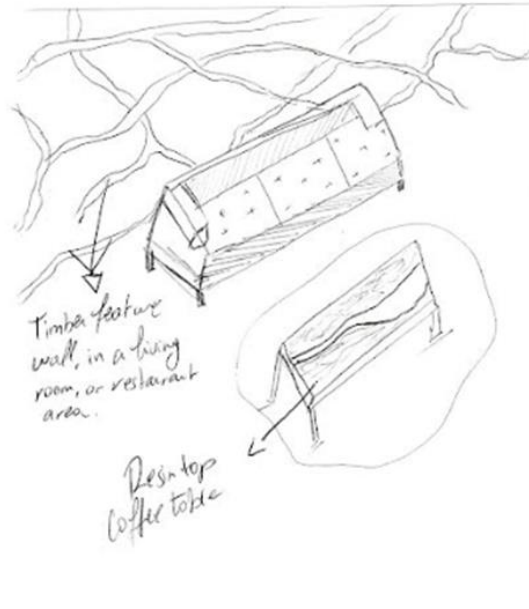
# Joanne Duffy's original artwork



My original oil painting artwork. I was inspired by the interior branches and the colours .



Sketching branches on walls for the Bar area.





1st floor lobby is designed with large water effect sheet on apartment doors, skirting board and columns, against the white for a stronger texture and brighter effect. The several dome lights provide a gentle and diffused light that can fill the entire space.

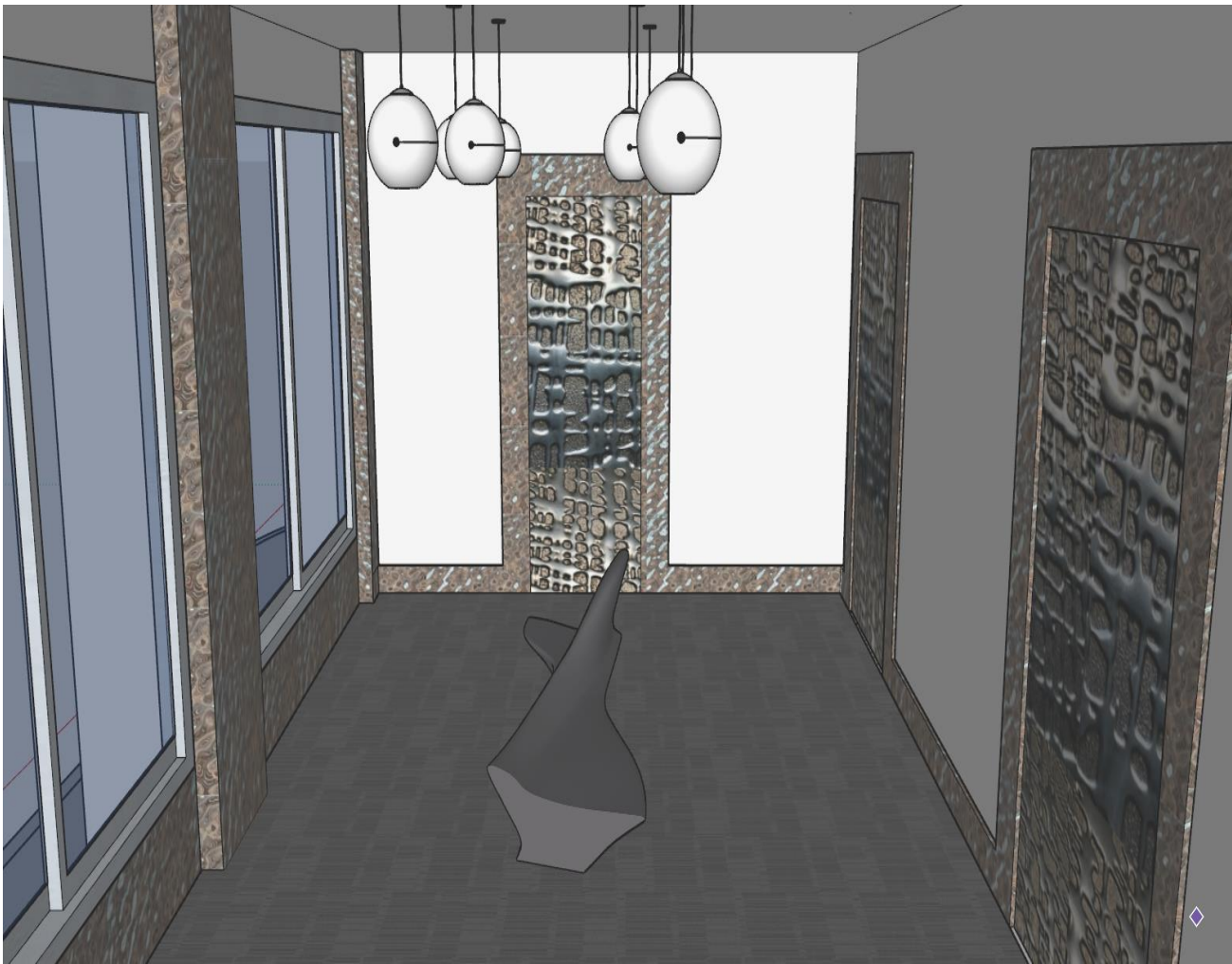
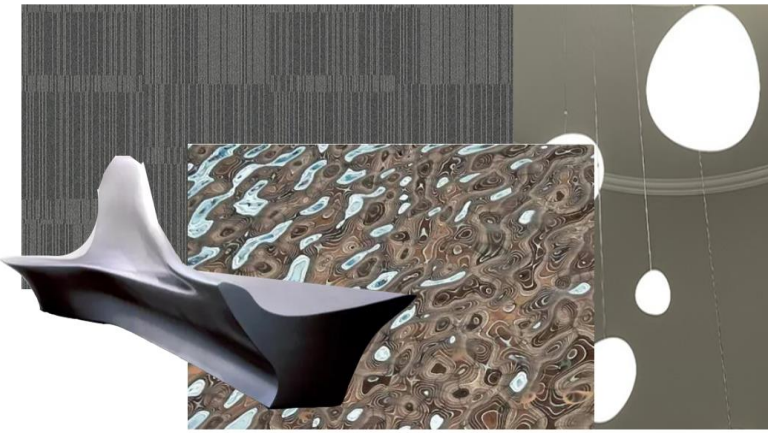
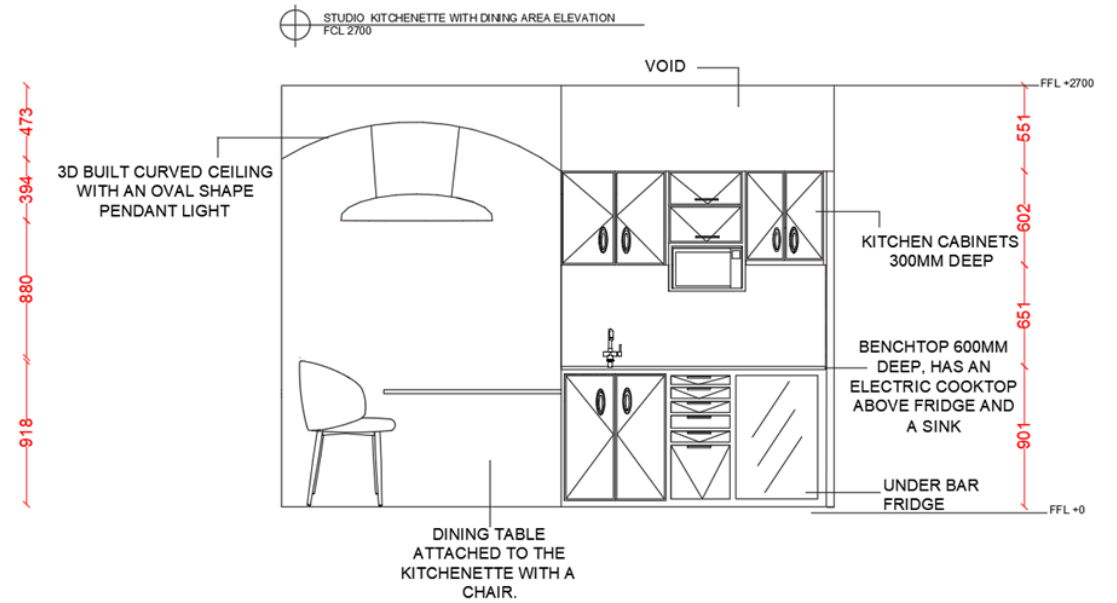


Photo for inspiration



Lobby Mood board.

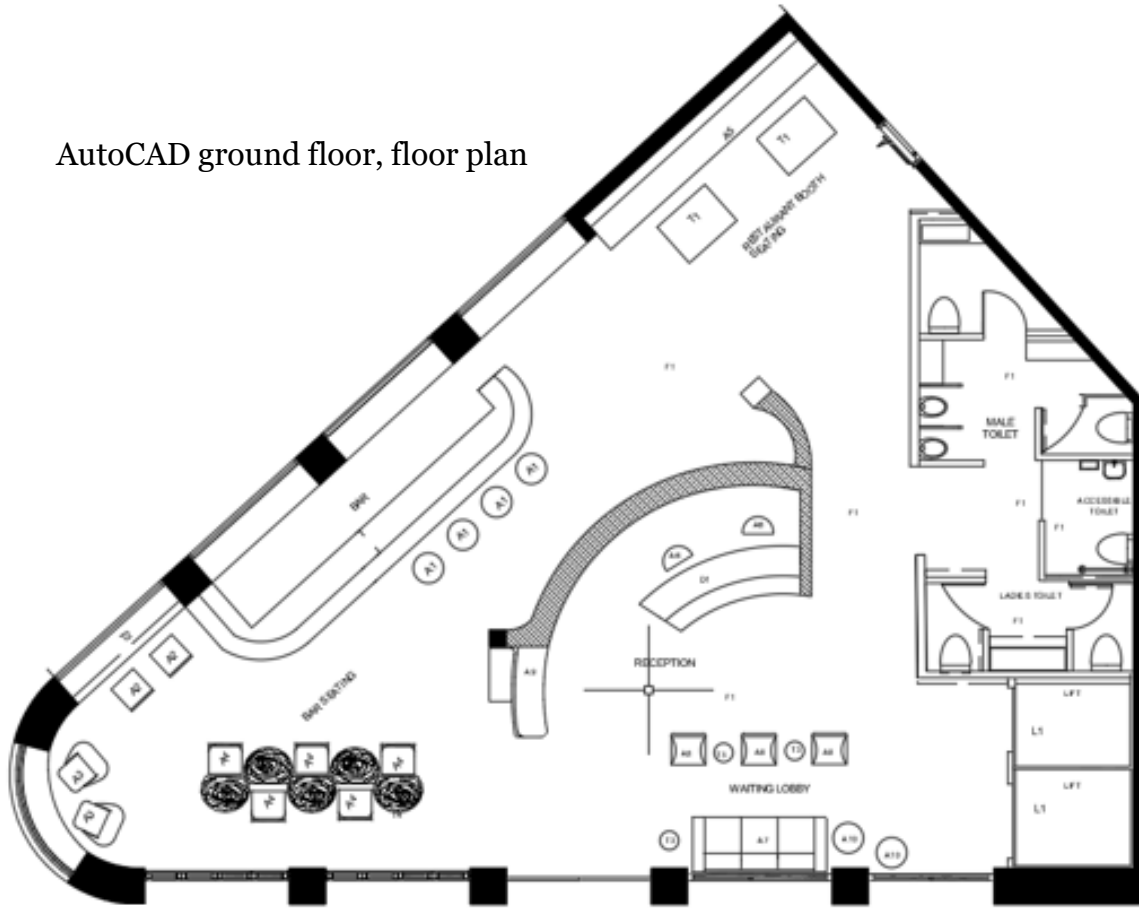
Rendered studio kitchen elevation  
Art series Hotel Group Perth.



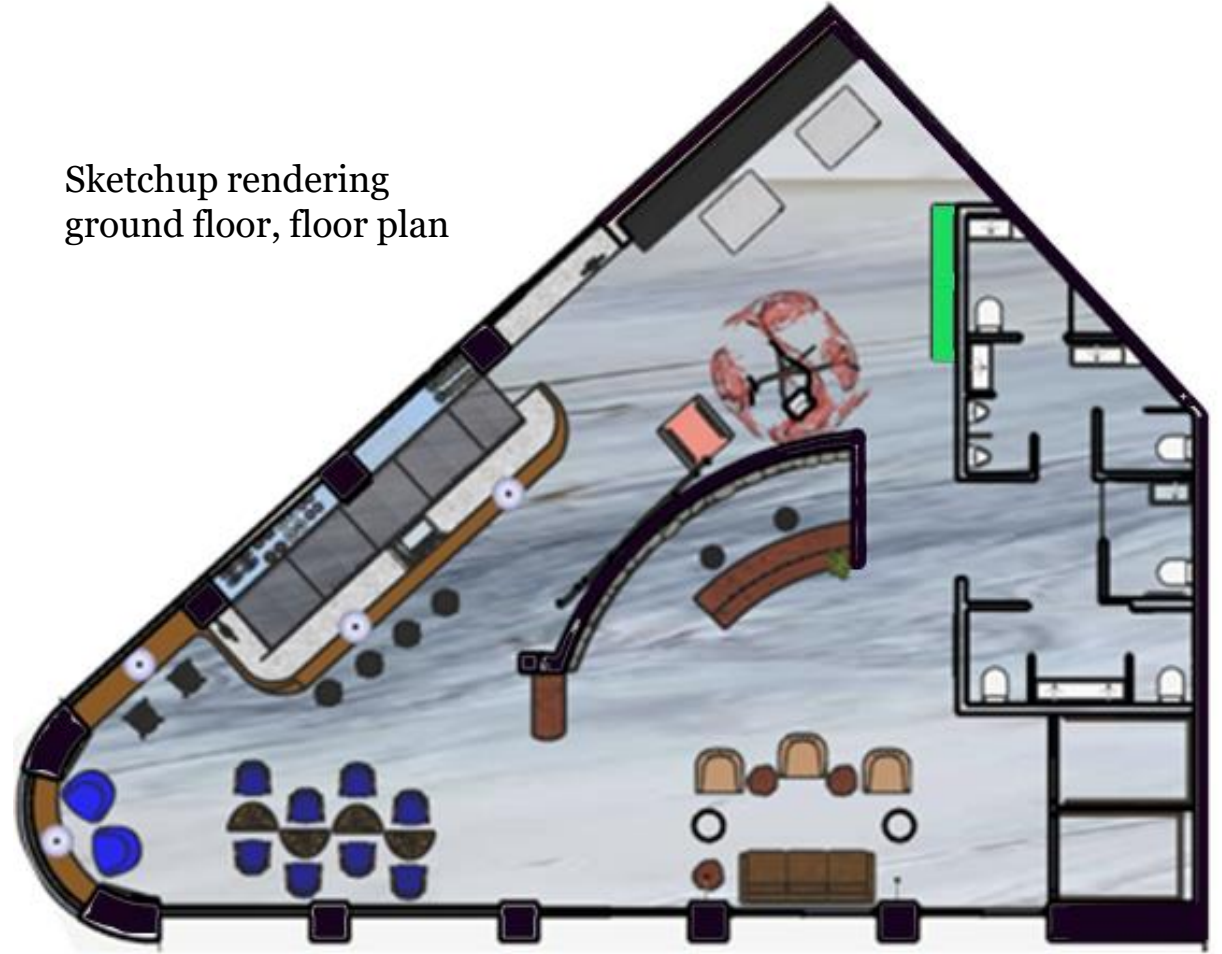
I designed the kitchen including the dining table as an extended benchtop to allow more space to move around the studio room.

Ground Floor, floor plan rendered

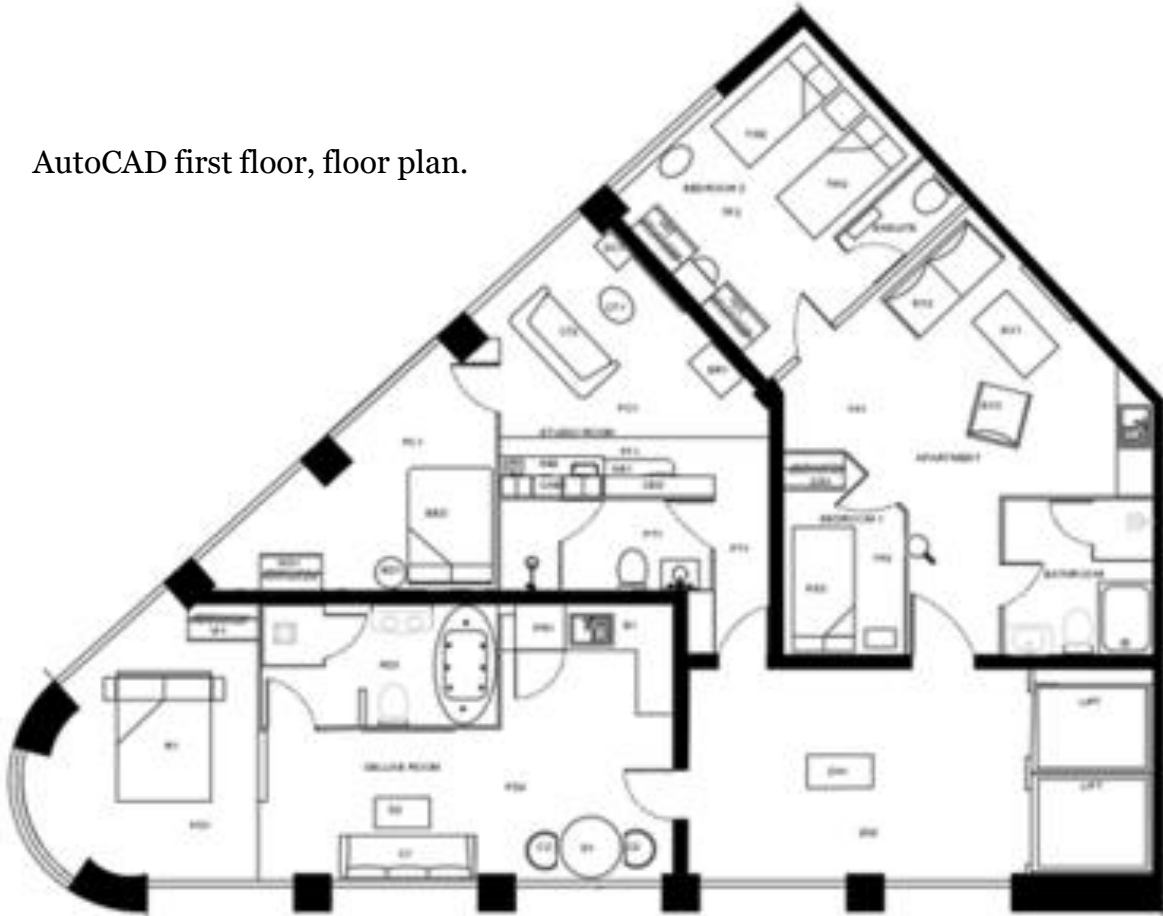
AutoCAD ground floor, floor plan



Sketchup rendering ground floor, floor plan



AutoCAD first floor, floor plan.

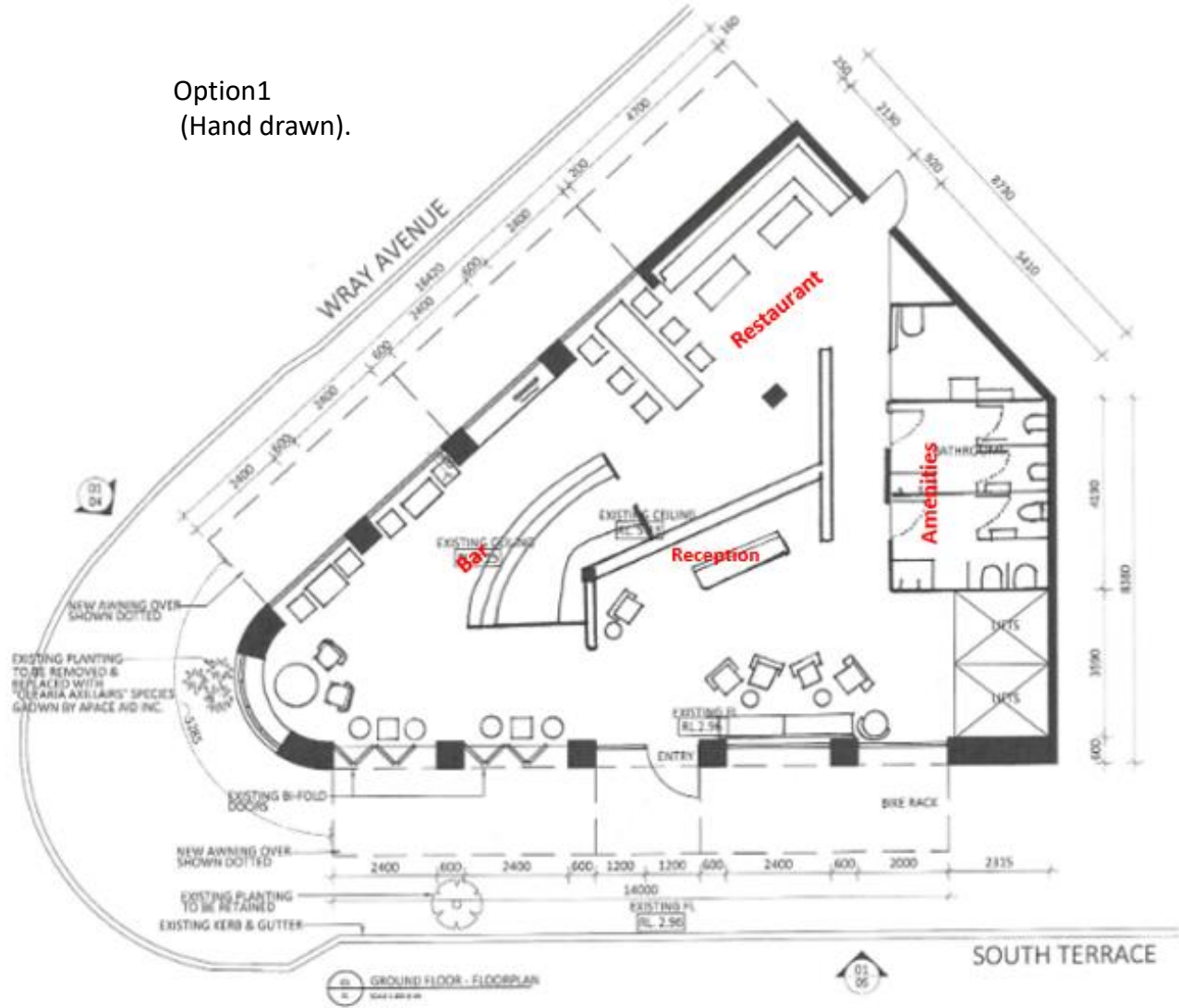


Sketchup rendering first floor, floor plan



Created different floor plans to scale for the Art Series hotel in Perth. The ground floor consist of a hospitality area, reception, lobby and amenities. please see following options.

Option1  
(Hand drawn).



Option2

