

Abigail Morgan

INTERIOR DESIGN

BACHELOR OF INTERIOR DESIGN COMMERCIAL

A00051005

DONNA HAY CAFE

PROJECT

Donna Hay Cafe
Take away & Dine in Cafe

LOCATION

Shop 1 / 43 - 45 North Steyne, Manly NSW 2095
Directly across from beach with water views

YEAR

2023

CLIENT BRIEF

- Natural Light
- Neutral, and pastel blue colour palette
- Self-service area
- Open kitchen
- Flexible seating arrangements
- Booth seating
- Open, but functional
- Located near the water with an ocean view

PROJECT DESCRIPTION

Donna Hay Café visionary concept "Cooking is an art, and each ingredient is a stroke of paint on the canvas of a plate." Harmonizes exceptional cuisine, welcoming ambience, and community connection. Rooted in Donna Hay's culinary philosophy, the café reimagines the dining experience.

The café's design seamlessly blends contemporary aesthetics with natural elements. The café offers a unique self-service experience, inviting guests to curate their culinary journey within a welcoming environment. At Donna Hay's Cafe, the design echoes her culinary philosophy by seamlessly integrating natural textures such as travertine, timber features, modern aesthetics, and a harmonious colour palette of neutrals and a range of blue hues, creating an inviting and aesthetically pleasing space that mirrors the balance and artistry found in her exquisite dishes.

A daring, pastel blue POS station sets the tone of the interior. Lacquered white surfaces with Venetian wall textures grace the dining area. The design's focal points are the textured hammered gold installations above the contrasting dark teal booth seating. Timber accents on the tables and striking shelving behind the counter add a unique touch to the space. The space boasts an architecturally designed ceiling, with an open layout that allows natural light to flood in through the floor-to-ceiling glass doors and windows at the entrance.

SOFTWARE & SKILLS

SketchUp
Enscape
AutoCAD
Hand sketching

3D VISUALISATIONS



Entrance

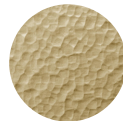


Booth Seating



POS

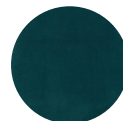
MATERIALITY



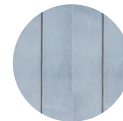
OBERFLEX
Hammered Brushed
Brass



HAVWOODS
Solid Veneer,
European Oak



KVADRAT
Balboa
100% polyester



PERINI TILES
Flow Wash Denim
porcelain tiles

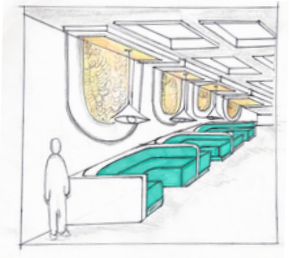
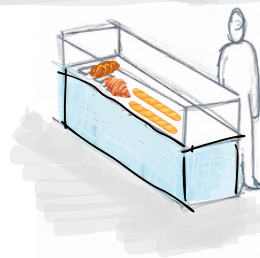
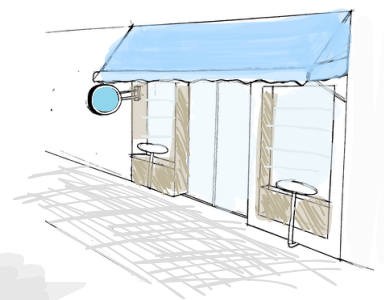


ARCHPRO
Cubi Series Concrete
Tiles

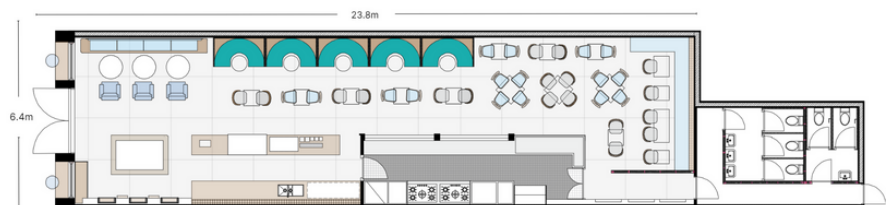


MARBLE & CERAMIC
Classico Light
Tumbled Travertine

CONCEPT DEVELOPMENT



FLOOR PLAN



KA LOKAHI THEATRE

PROJECT

Ka Lokahi Hawaiian Theatre

LOCATION

Oahu, Hawaii USA

YEAR

2023

CLIENT BRIEF

- Create a one-of-a-kind entertainment theatre seamlessly integrating art and architecture.
- Select a suitable location for a large-scale theatre anywhere worldwide.
- Incorporate the 'CUBUS' method to assist in crafting a rotational floorplan.
- The CUBUS method provides a structured framework through sketch patterns for crafting functional and aesthetically pleasing spaces.

PROJECT DESCRIPTION

Welcome to the Ka Lokahi Theatre, a celestial marvel nestled in the heart of Hawaii, where the elements of nature intertwine seamlessly with the artistry of design.

Illuminated by strategically placed circular skylights and clerestories, the theatre basks in the embrace of natural light, creating a dynamic interplay of light and shadows. Central to the design is the star-shaped stage, an innovative feature that allows performers to shine brightly from every angle.

The name "Ka Lokahi" was chosen purposefully, signifying "harmony and peace" in Hawaiian. The exterior transforms into a captivating display, thanks to the five-pointed star-lighting facade, inviting guests into a world where creativity knows no bounds.

The project encountered the challenge of scale, allowing myself to utilize the CUBUS method to ensure it did not compromise the intimacy and connection the audience felt with the performances. Natural materials like travertine, stone, and timbers, in combination with the contrast between red acoustic walls and olive green seating, establishes a timeless and earthy aesthetic.

The Theatre stands as a testament to the marriage of creativity and technique, embodying a dream nurtured through the CUBUS method's sketching journey.

SOFTWARE & SKILLS

SketchUp
Enscape
AutoCAD
Hand sketching

3D VISUALISATIONS



Starlight Featured Theatre Stage

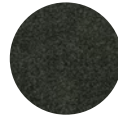


Exterior Landscaping

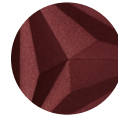


Theatre Seating

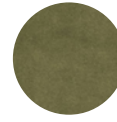
MATERIALITY



OBERFLEX
Hammered Brushed
Brass



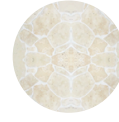
HAVWOODS
Solid Veneer,
European Oak



KVADRAT
Balboa
100% polyester



PERINI TILES
Flow Wash Denim
porcelain tiles



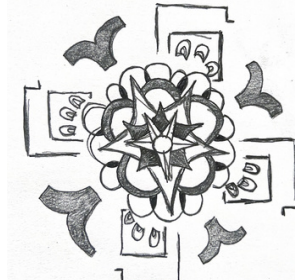
ARCHPRO
Gubi Series Concrete
Tiles



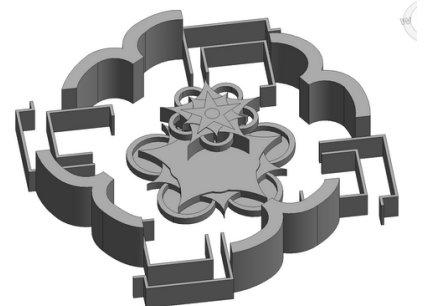
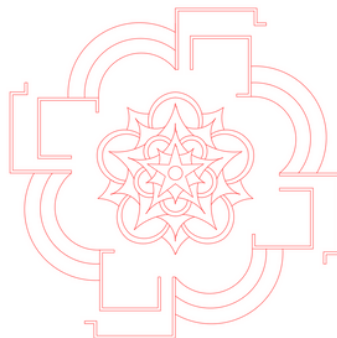
MARBLE & CERAMIC
Classico Light
Tumbled Travertine

CONCEPT DEVELOPMENT

CUBUS Method



FLOOR PLAN



NETFLIX

PROJECT

Netflix Headquarters

LOCATION

1 Bligh Street, Sydney

YEAR

2023

CLIENT BRIEF

- A reception that strikes a balance between sophistication and a fun inviting environment
- The incorporation of Netflix brand colours
- A functional reception desk and a comfortable seating area.

PROJECT DESCRIPTION

Netflix, a global leader in entertainment streaming, has embarked on a visionary project to elevate all areas of its headquarters amongst the heart of Sydney CBD. Situated at the core of the company's corporate campus, this project seeks to reimagine the entrance space, infusing it with the distinctive essence of Netflix's brand identity.

The primary objective is to create an exceptionally welcoming and functional space that reflects the company's innovative culture, commitment to inclusivity, and sustainability values. Illuminated by its large glass windows, the reception basks in natural light, creating a charismatic interplay with tones and textures of timber walls highlighted by LED lighting. The incorporation of the Netflix colour palette is demonstrated in a cosy and playful seating area, complemented by interactive screens and digital displays.

At its focal point stands a striking red and black reception desk that seamlessly embodies the essence of Netflix as a whole. The desk's design effectively incorporates a sense of sharpness associated with the world-renowned logo establishing a consistent and visually pleasing connection. The contrast between the deep red and greenery elements not only reflects the brand's commitment to precision but also showcases a clever appreciation for Netflix's intelligent and innovative essence.

SOFTWARE & SKILLS

- SketchUp
- Enscape
- AutoCAD
- Hand sketching

3D VISUALISATIONS



Reception Desk

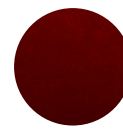


Waiting Area

MATERIALITY



KABOODLE
American Oak AS
Colour Swatch



WITTMAN
Vuelta 3 Seater Sofa



CAESEARSTONE
504 Lumea marble



CORIAN
Surface sheets
Hot Red

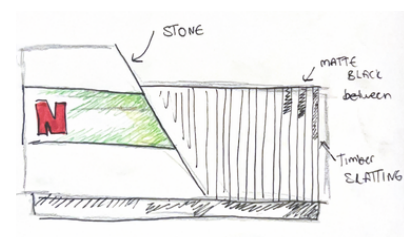
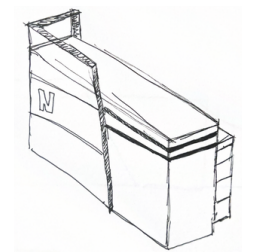
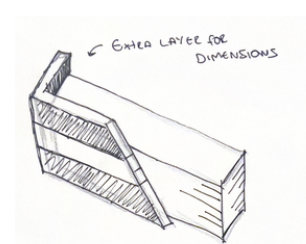
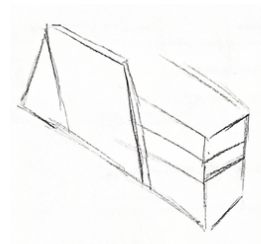


CORIAN
Surface sheets
Deep Titanium

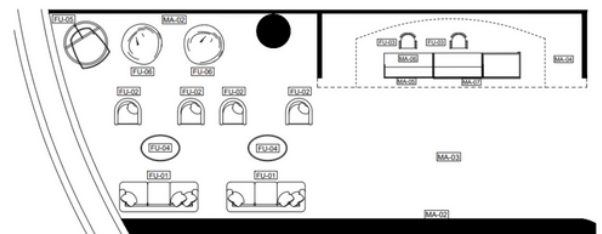
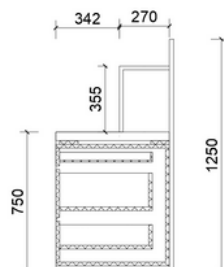


PACIFICA
Dark Gray Matte

CONCEPT DEVELOPMENT



FLOOR PLAN



SCULPTURE IN THE CITY

PROJECT

Barrack Street New Concept Design

LOCATION

Barrack Street, Sydney CBD

YEAR

2021

CLIENT BRIEF

- Inner City street design for a public space and private commercial tenancy for artist Anish Kapoor's inspiring artworks.
- The community needs a space to attract people, enhance the environment and social aspect
- Interactive sculptures, interplay lighting, and greenery features.
- Plants/greenery that will survive on low maintenance
- Concept of manipulating form and space and distorting surroundings
- The laneway to have some form of structure and natural shading.

PROJECT DESCRIPTION

Life's value cannot be determined. Everyone deserves a fun and interactive experience to seek through the manipulation of biomorphic forms. Anish Kapoor's awe-inspiring masterpieces will take centre stage in the revitalized Barrack Street, now officially christened 'Sculptures In The City!' Renowned for his monumental stainless-steel column-like sculptures that play with and alter light, Kapoor's creations will redefine our perception of the surroundings.

The redesigned street promises to beckon the community, offering an escape from the drab grey of the inner city into a lively realm where urban dwellers can unwind. Anish Kapoor brings an Expressionist touch to infuse the atmosphere with creativity, joy, and unadulterated relaxation, inviting all to engage their imagination. The lane will unfold as an interactive passage of light and sculpture, featuring a public coffee/food stand and a connection to the Art Bar—a haven for Sydney's pedestrians and city workers to revel in the artistic splendour.

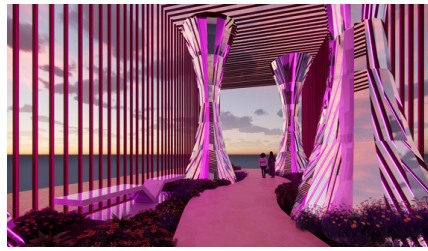
SOFTWARE & SKILLS

- SketchUp
- Enscape
- Hand sketching

3D VISUALISATIONS



Laneway



Evening LED Lighting



Day Time Lighting

MATERIALITY



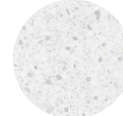
PORTA
American Oak
Timber



STONE & ROCK
Classic Cream Crazy
Paver Loose Stone
Travertine



STAINLESS STEEL

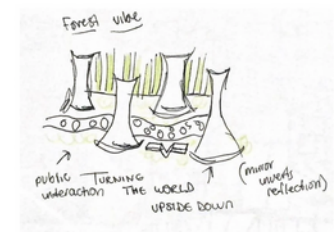


TILE MALL
Agglo Matt Lido

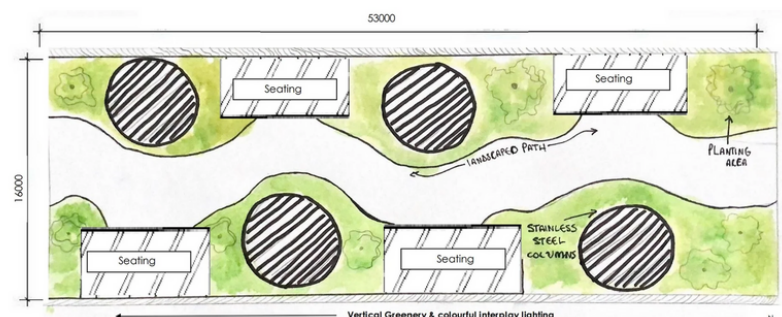


LED LIGHTING
Waterproof Neon
tube Lighting

CONCEPT DEVELOPMENT



FLOOR PLAN



Scale 1:200 @A3



PADDINGTON TERRACE HOUSE

PROJECT

Paddington Terrace House new design

LOCATION

166 Paddington St, Paddington NSW

YEAR

2023

CLIENT BRIEF

- Open Layout
- Maximise Storage Areas
- Functional layout
- 4th Level Extension
- New Stair Design
- Maximise Natural Light

SOFTWARE & SKILLS

AutoCAD

DOCUMENTATION

